

ARBOR LANDING *at* HAMPSTEAD

INDEPENDENT LIVING | ASSISTED LIVING SERVICES | MEMORY CARE





YOU HAVE OPTIONS IN AGING

Arbor Landing's innovative approach to senior care does away with the age-old "one-size-fits-all" model. Rather than hopscotching from one senior living community to another as your loved one's needs change, Arbor Landing is bringing three distinct and affordable lifestyle options under one roof.





INDEPENDENT LIVING *WITH ASSISTED LIVING SERVICES*

All the independence your loved one desires, along with all the scheduled in-home services he or she may one day need.

HORIZONS MEMORY CARE

Specialized care for seniors who live with the effects of Alzheimer's disease or a related dementia.



INDEPENDENT LIVING

WITH ASSISTED LIVING SERVICES

Our independent living neighborhood offers seniors the perfect balance between independence and support, security and freedom, privacy and socialization.



Private studio, one-bedroom, and two-bedroom apartments with convenient kitchenettes, gracious tiled bathrooms, walk-in closets, and individually-controlled heat and air.



Wireless emergency response systems to summon assistance with the touch of a button.



Three restaurant-style meals served daily in our elegant and inviting grand dining room.



Diverse daily social activities planned by a full-time social director, including wellness programs, card clubs, and outings to area attractions, restaurants, and community events.



Weekly housekeeping and linen services.



In-house maintenance services.



Utilities (electricity, water, WiFi) are included at no additional charge.



Home Care Services by **SUMMIT CARE** *at HOME*

Our on-site home care agency, Summit Care at Home, provides our team with the right resources to meet your loved one's changing care needs. With supervision from a registered nurse, Summit Care's friendly and professional caregivers ensure that your loved one is safe and comfortable by offering the following services:

- Medication reminder programs
- Personal laundry services
- In-room meal services
- Home health, physical, or occupational service coordination
- Morning and evening care
- Shower assistance
- Toileting assistance
- Safety checks
- Pet care
- Meal and event reminders and staff escorts





**OUR
SUITES**





**THE MAGNOLIA
(STUDIO)
468 SQ.FT.**



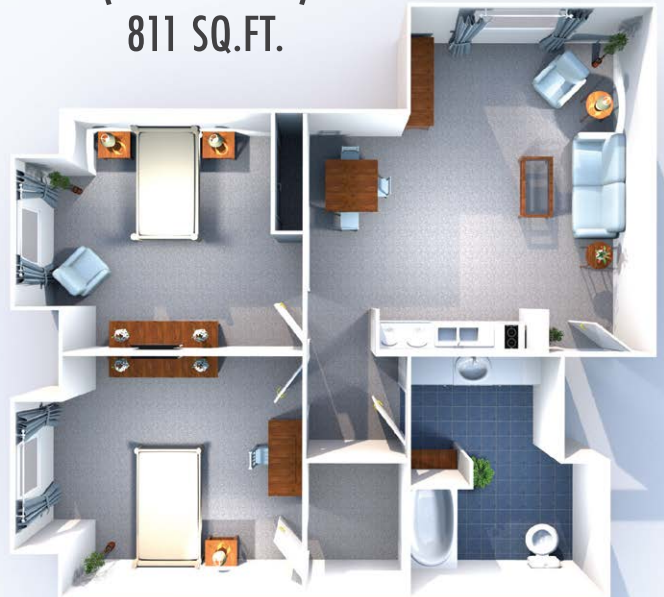
**THE DOGWOOD
(STUDIO)
541 SQ.FT.**



**THE MAPLE
(1-BEDROOM)
618 SQ.FT.**



**THE CYPRESS
(2-BEDROOM)
811 SQ.FT.**



HORIZONS

MEMORY CARE

Our Horizons neighborhood offers a secure environment for seniors with Alzheimer's or a related dementia, who need extra care and attention to be able to thrive in spite of their cognitive impairments.



Horizons caregivers receive special training to understand and meet the changing needs of residents who struggle with memory loss.

Our full-time Horizons social director plans activities that are appropriate, engaging, and promote social involvement.



Horizons residents benefit from higher caregiver-to-resident ratios.



HORIZONS SUITES



OUR CORE VALUES



1

It's all about the **resident**. The most direct route to financial security is excellent resident care.

2

Our **residents** will never be happier than our team members.

3

We promote from within. As our company grows, so do our **team members**.

4

More important than **what** we do is **how** we do it.

5

We do the **right** thing, even when it's not convenient.

OUR MISSION STATEMENT

“ I never want to feel like I need to hide from someone in the grocery store because we didn't do a good job of taking care of their mom or dad. ”

- Jeff Dickerson, Co-Founder & CEO

WHAT OTHERS SAY ABOUT OUR RIDGE CARE COMMUNITIES



“ I want to thank you for the care, friendship and compassion you have shown my mother for the past three years. Quite frankly, I'm not quite sure what we would have done without you. Mother moving there worked very well for our entire family. A major reason it worked so well was because of the caring, professional staff. I will always be an advocate for your community and the services you provide. ”

- James H., Kernersville, NC | Kerner Ridge Assisted Living

“ My family is so grateful to have our father spend his 'golden years' in your community. He will celebrate his 90th birthday in January, surrounded by his new 'family' and friends. A special thank you to all of the kind folks who have provided my father with love and support. ”

- Kirby D., West Jefferson, NC | Forest Ridge Assisted Living



“ We have only positive things to say about Chatham Ridge's care of my mother-in-law. They have exceeded our expectations, and their first and foremost attention is on the wellbeing and safety of the residents. We found the staff very accommodating of our needs. The facility was well maintained and practically spotless. The activities are particularly meaningful and therapeutic. Most importantly, mom is happy and now calls Chatham Ridge her home. We've been amazed at how well she has adjusted to this new setting. ”

Beth and Joe A., Chapel Hill, NC | Chatham Ridge Assisted Living



NEXT STEPS

- Reserve your preferred suite for two weeks by paying the community fee.
- Complete and return the confidential financial disclosure.
- Discuss necessary health paperwork with Arbor Landing team.
- Schedule a time for our resident care team to complete an assessment of your loved one.
- Choose a move-in date.
- Relax! We're here to guide you through every step of the process.



ARBOR LANDING *at* HAMPSTEAD
INDEPENDENT LIVING | ASSISTED LIVING SERVICES | MEMORY CARE

13937 US Highway 17 North
Hampstead, NC 28443

(910) 406-1451

www.RetireInHampstead.com